



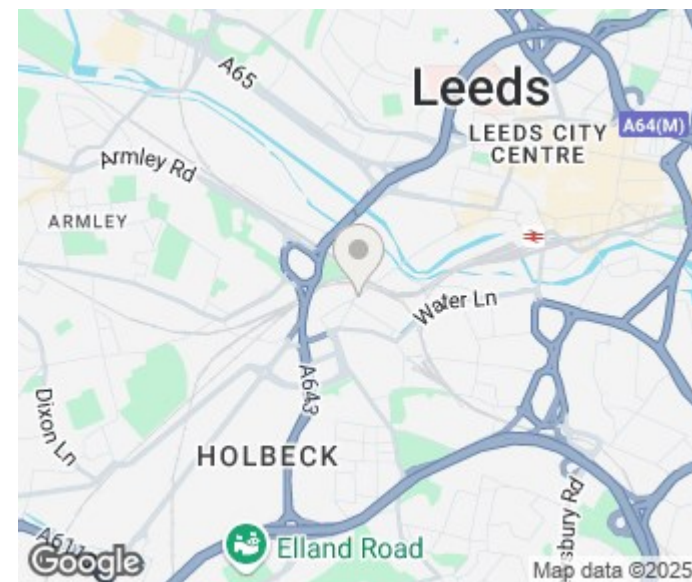
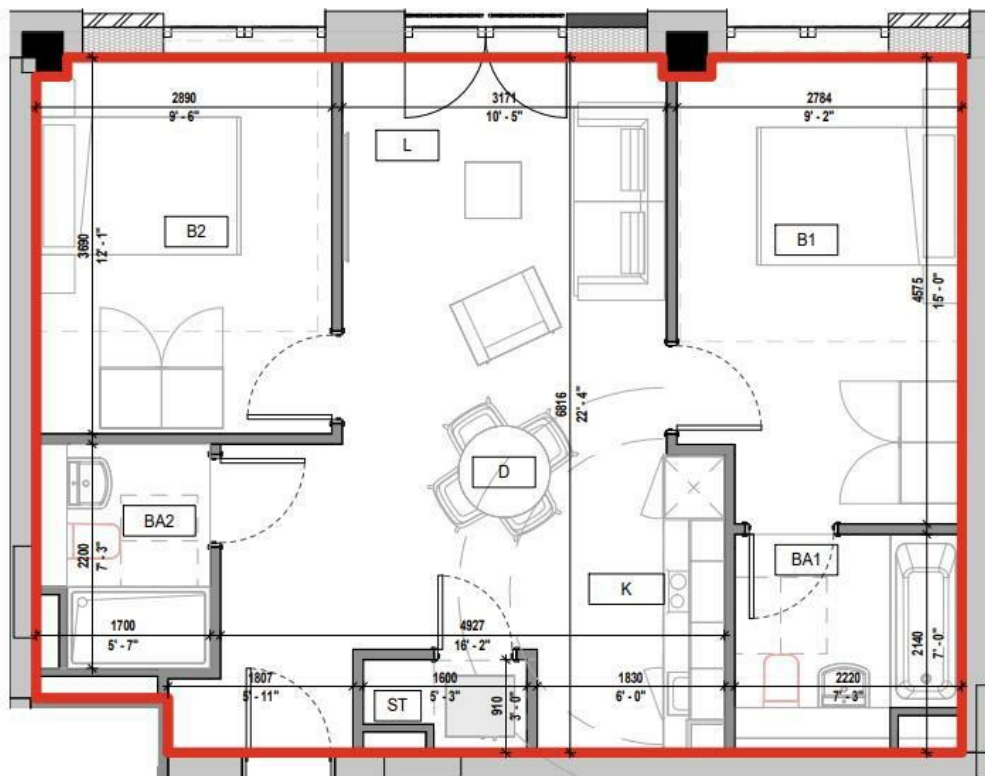
97 SPRINGWELL GARDENS, WHITEHALL ROAD  
LEEDS, LS12 1FH

£299,999  
LEASEHOLD

Immaculate Apartment | New Development | Residents Garden | Spacious Two Bedrooms, Two Bathrooms | Communal Workspace | Lovely Home or Ideal Investment Opportunity

MONROE

SELLERS OF THE FINEST HOMES



Energy Efficiency Rating		
	Current	Potential
Very energy efficient - lower running costs		
(92 plus) <b>A</b>		
(81-91) <b>B</b>	87	87
(69-80) <b>C</b>		
(55-68) <b>D</b>		
(39-54) <b>E</b>		
(21-38) <b>F</b>		
(1-20) <b>G</b>		
Not energy efficient - higher running costs		
<b>England &amp; Wales</b>	EU Directive 2002/91/EC	

Agents Note: Whilst every care has been taken to prepare these particulars, they are for guidance purposes only. All measurements are approximate and are for general guidance purposes only and whilst every care has been taken to ensure their accuracy, they should not be relied upon and potential buyers/tenants are advised to recheck the measurements

Leeds City Centre  
Leeds City Centre  
Whitehall Road Leeds  
LS12 1FJ

0113 350 0866  
citycentre@monroeestateagents.com

MONROE

SELLERS OF THE FINEST HOMES